



# MONTHLY MEMBERSHIP PROGRESS REPORT

District 32 A

Results as of: 4/30/2015

GMT: CARL HARRELL

LOCATION SOUTH CAROLINA

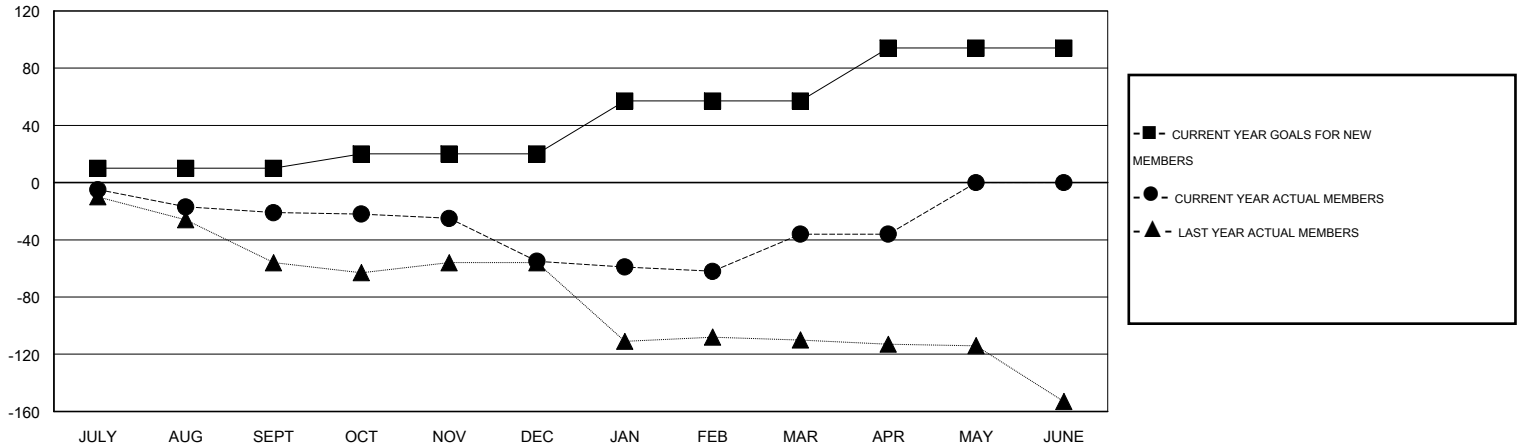
GMT CA 1

| Clubs                 |               |           |               |               | Members               |                 |                               |                 |               |
|-----------------------|---------------|-----------|---------------|---------------|-----------------------|-----------------|-------------------------------|-----------------|---------------|
| RESULTS FOR 2014-2015 |               |           |               |               | RESULTS FOR 2014-2015 |                 |                               |                 |               |
| QUARTER               | NEW CLUB GOAL | NEW CLUBS | DROPPED CLUBS | NET GAIN/LOSS | QUARTER               | NEW MEMBER GOAL | CHARTER AND NEW MEMBERS ADDED | DROPPED MEMBERS | NET GAIN/LOSS |
| JULY/AUG/SEPT         | 0             | 0         | 1             | -1            | JULY/AUG/SEPT         | 10              | 13                            | 34              | -21           |
| OCT/NOV/DEC           | 0             | 0         | 0             | 0             | OCT/NOV/DEC           | 10              | 31                            | 65              | -34           |
| JAN/FEB/MAR           | 1             | 0         | 0             | 0             | JAN/FEB/MAR           | 37              | 40                            | 21              | 19            |
| APR/MAY/JUNE          | 1             | 0         | 0             | 0             | APR/MAY/JUNE          | 37              | 9                             | 9               | 0             |

GOALS AND ACTUAL NEW CLUBS CUMULATIVE



GOALS AND ACTUAL MEMBERS CUMULATIVE



|                        |   |                                |
|------------------------|---|--------------------------------|
| DROPPED CLUBS: 1       | 19 CLUBS OF 38 ADDED 1 OR MORE NEW MEMBERS            | <b>GENDER DISTRIBUTION</b>     |
|                        |   | MALE 741 (70.37%)              |
|                        |   | FEMALE 312 (29.63%)            |
| <b>DROPPED MEMBERS</b> | <a href="#">CLICK HERE FOR HEALTH ASSESSMENT DATA</a> | <b>FAMILY UNIT MEMBERS</b> 238 |
| DECEASED 24            |   | HEAD OF HOUSEHOLD 116          |
| CLUB CANCELLED 17      |   | NON-HEAD OF HOUSEHOLD 122      |
| OTHER 88               |   |                                |
| <b>TOTAL</b> 129       |   |                                |